

# Mackerel pump system

Fishing Gear Workshop

Reykjavik

October 2013

Name: Hardi Hansen  
Occupation: Chief Engineer  
Vessel: m/v Finnur Fríði  
Company: Varðin

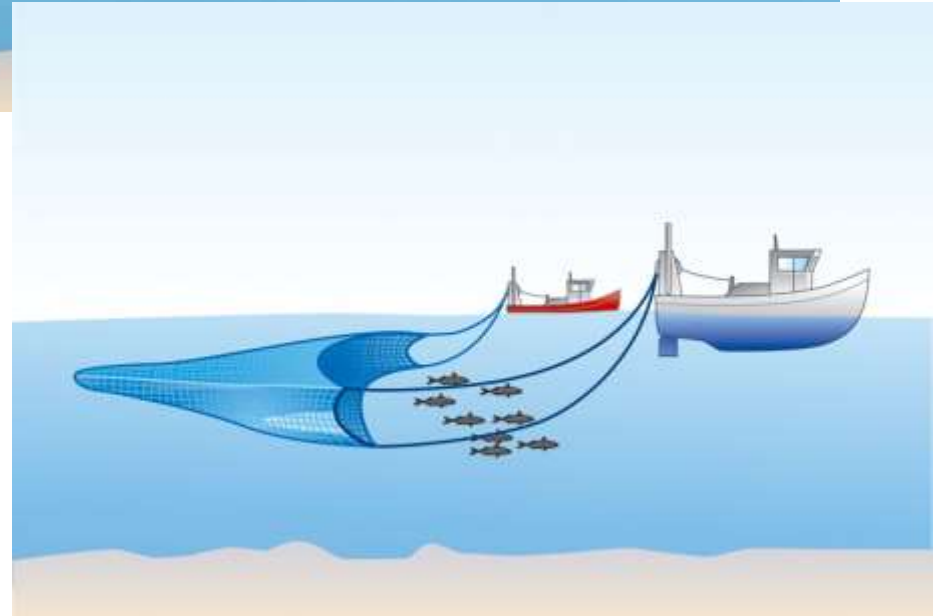
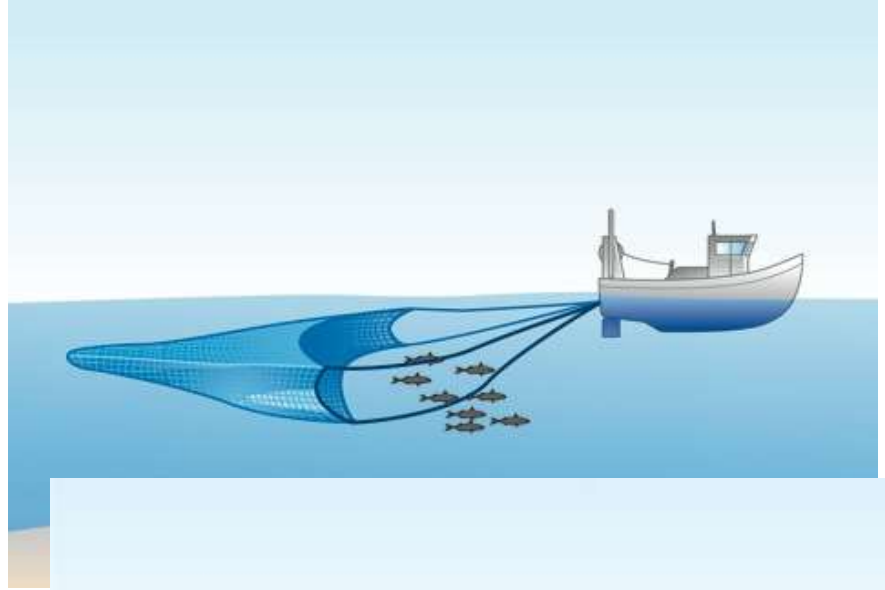
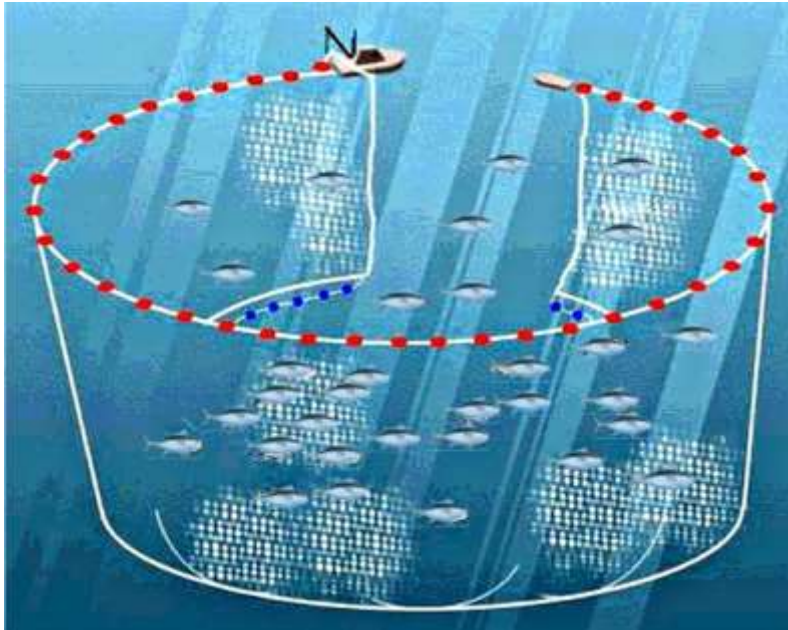


- Problem (challenge)
  - Solution
- Advantages/Disadvantages

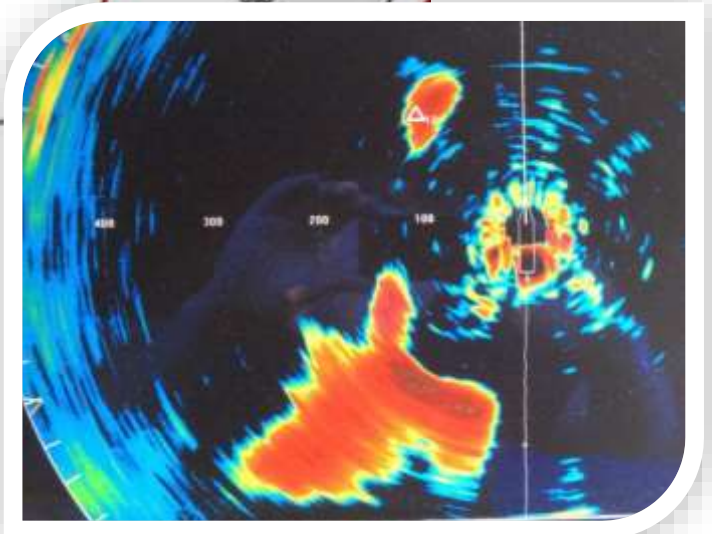
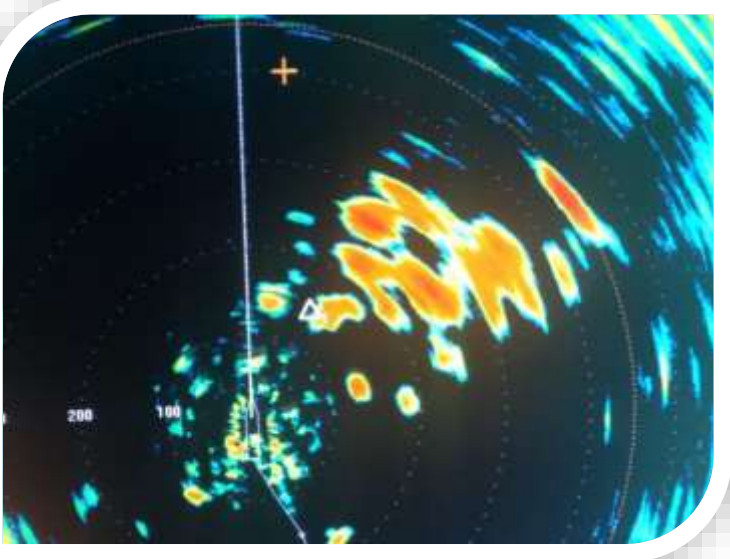
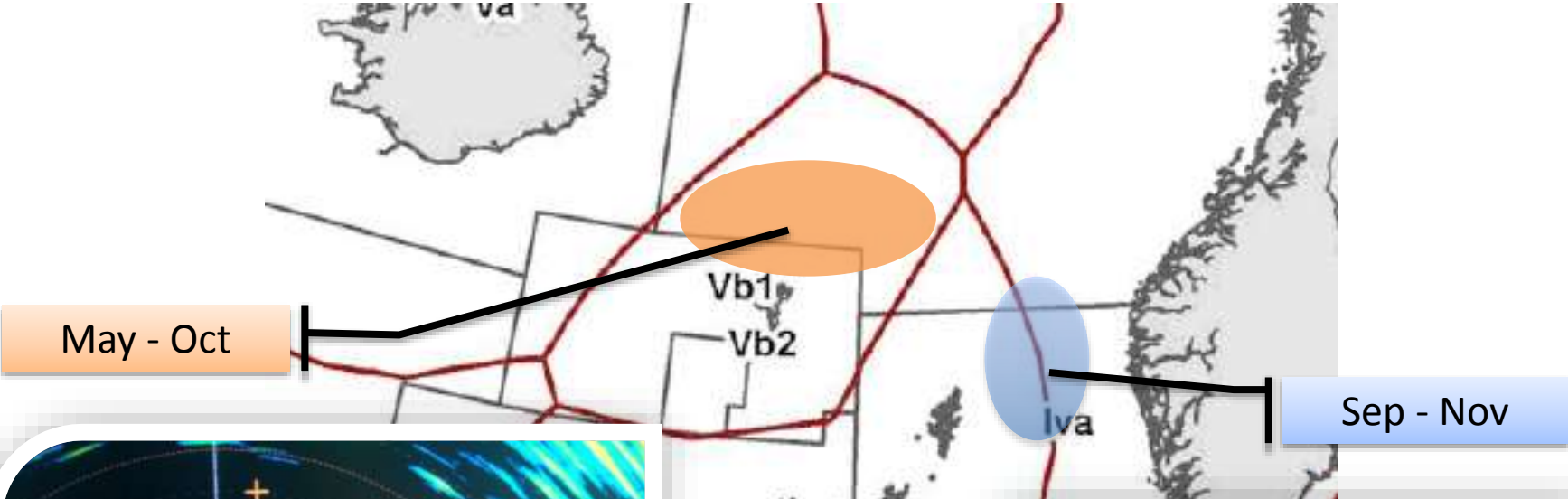
# m/v Finnur Fríði

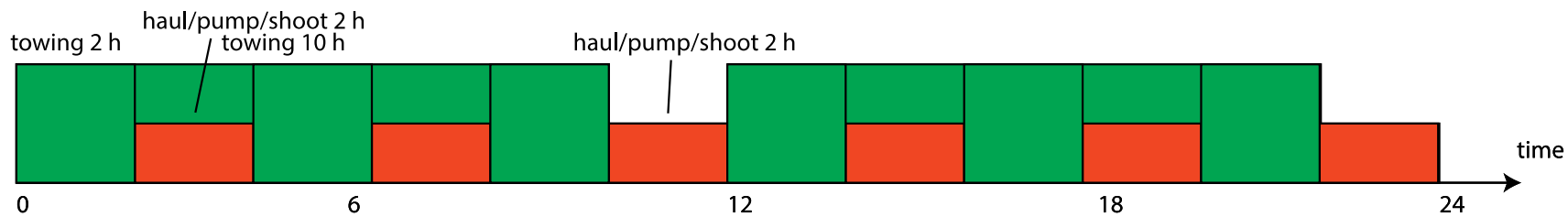
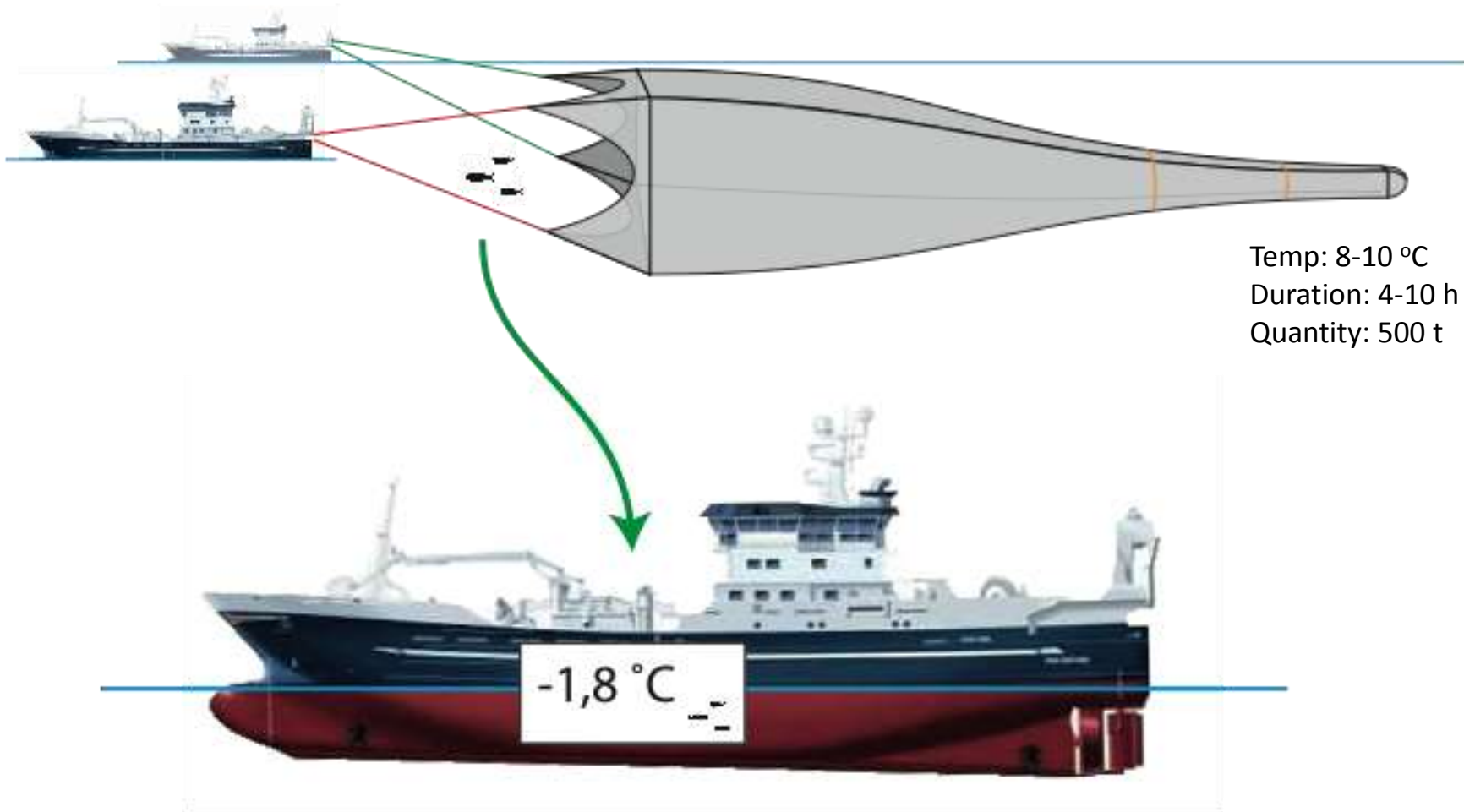


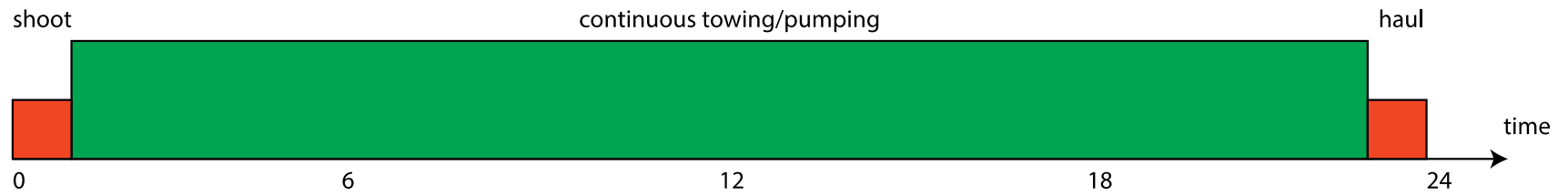
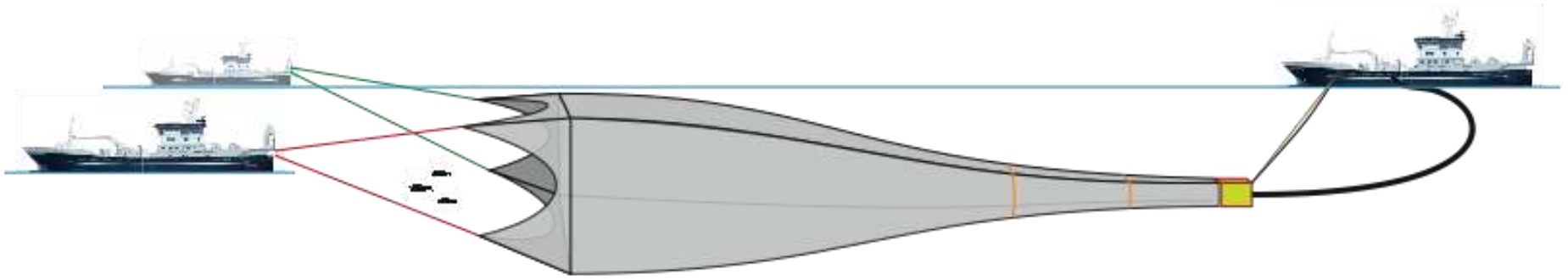
Foto: © Harald M. Valderhaug

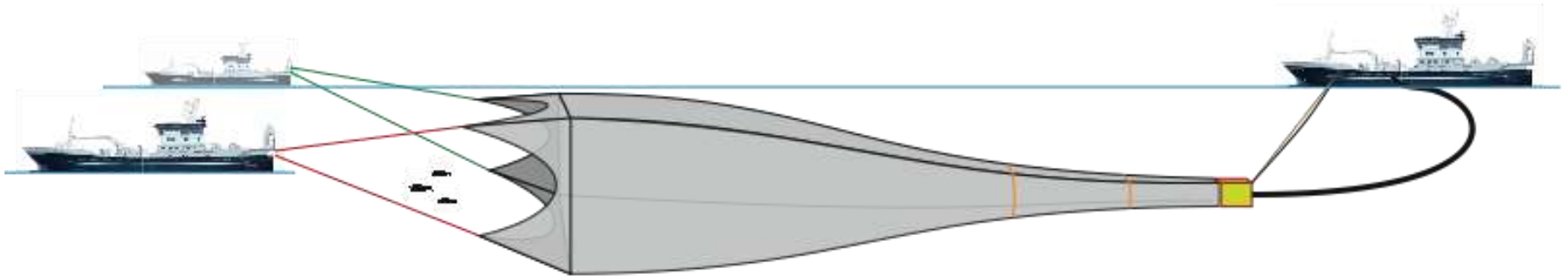


Mackerel fishing for Faroese vessels before and after 2010:

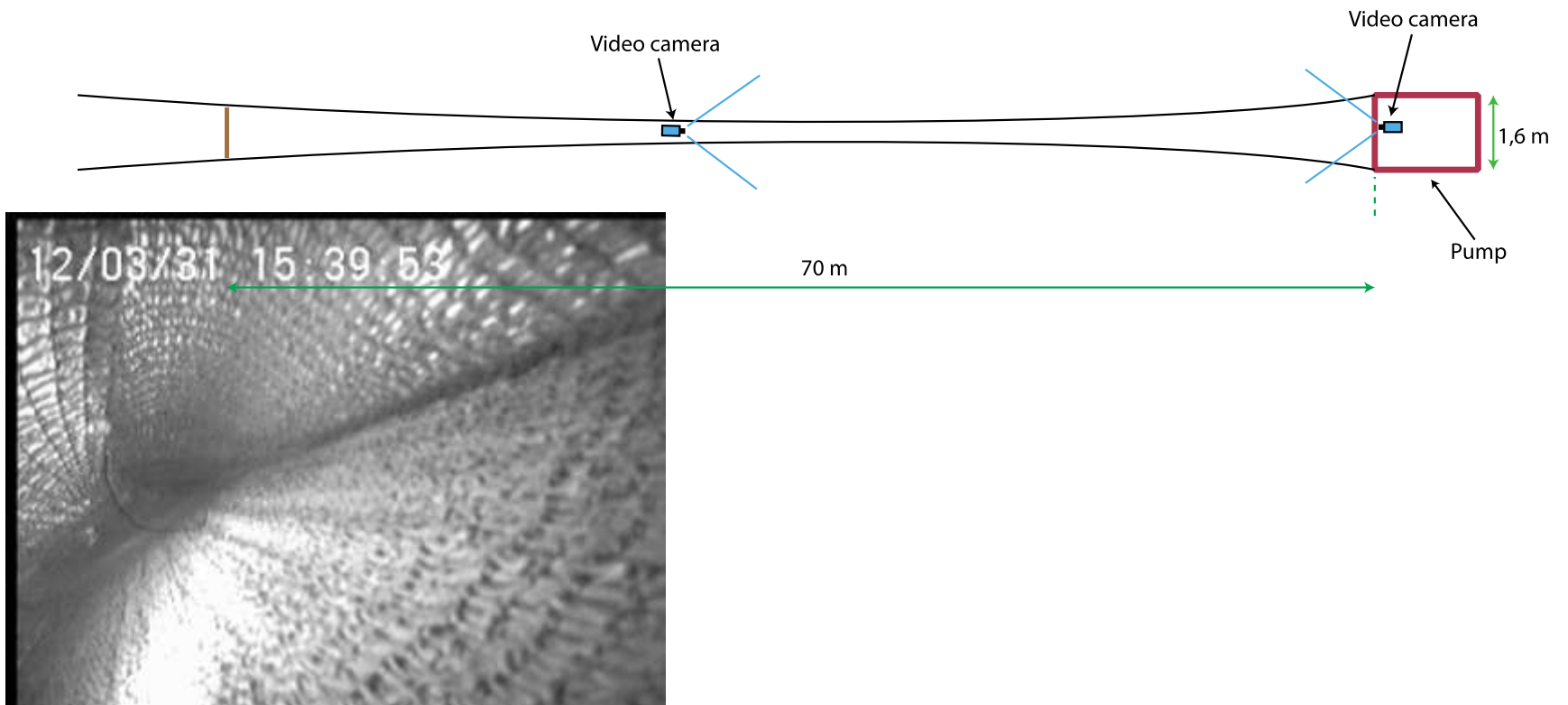




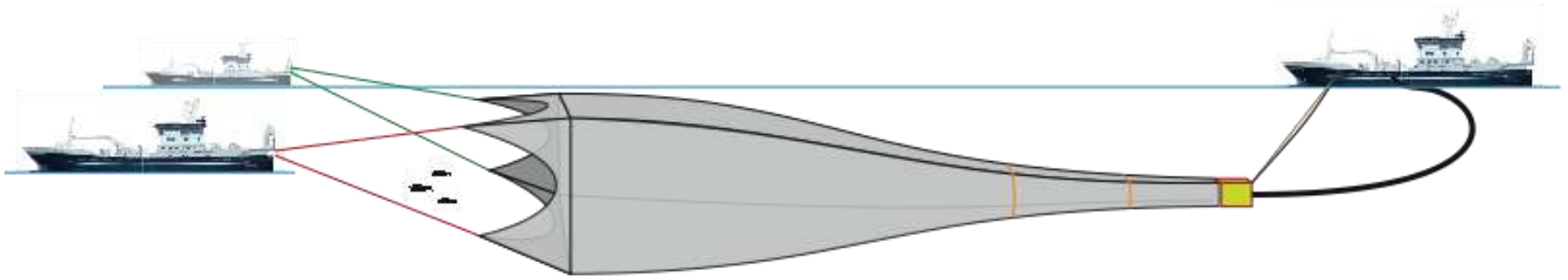




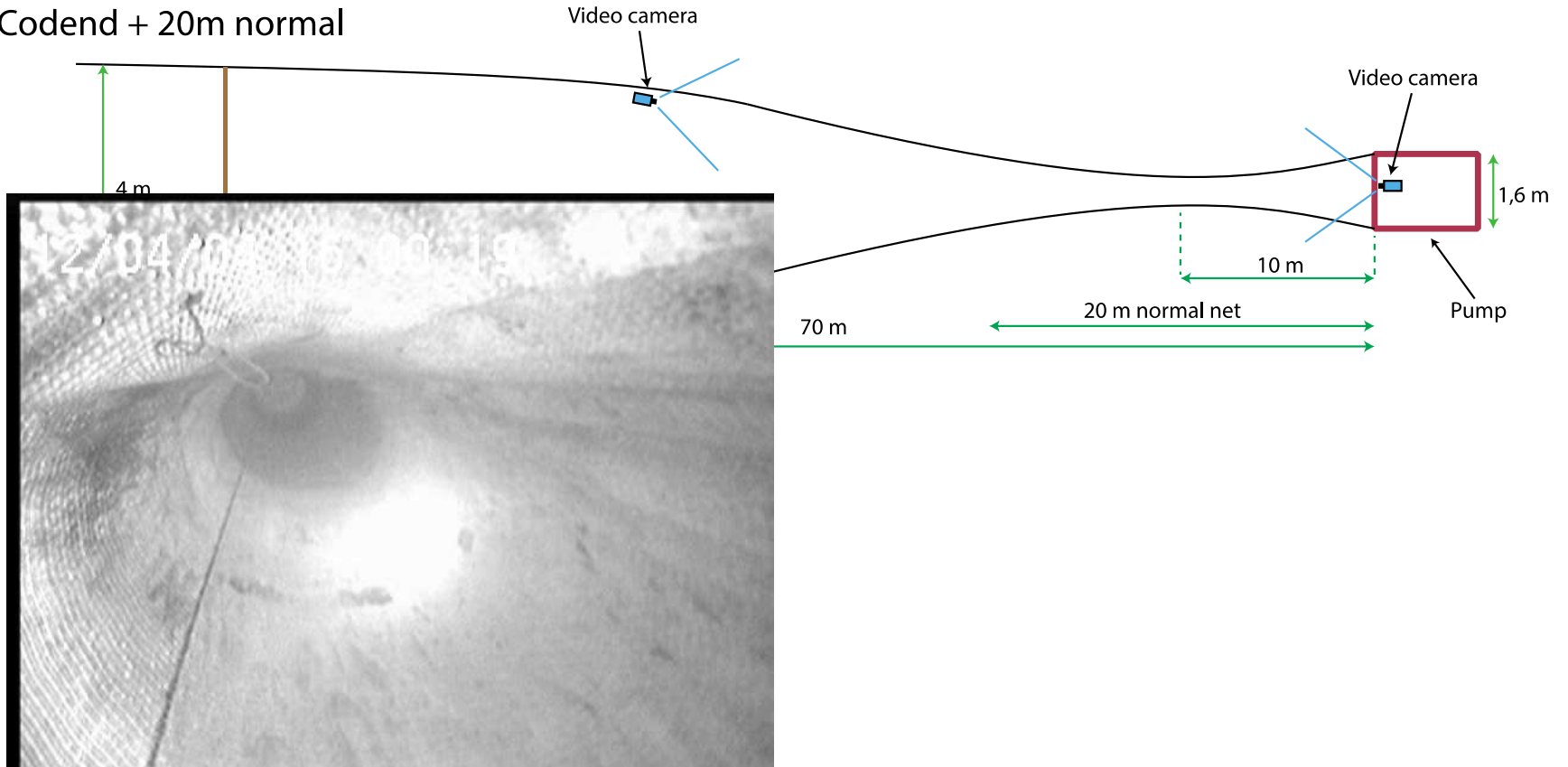
## Normal Codend

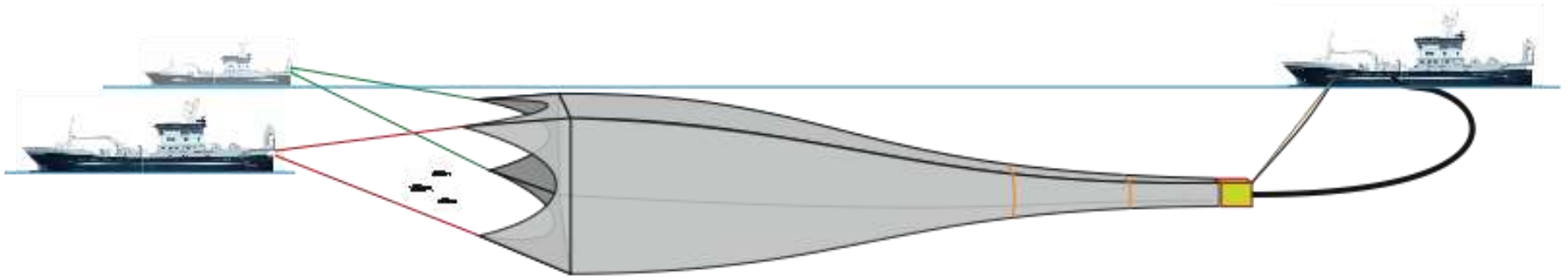




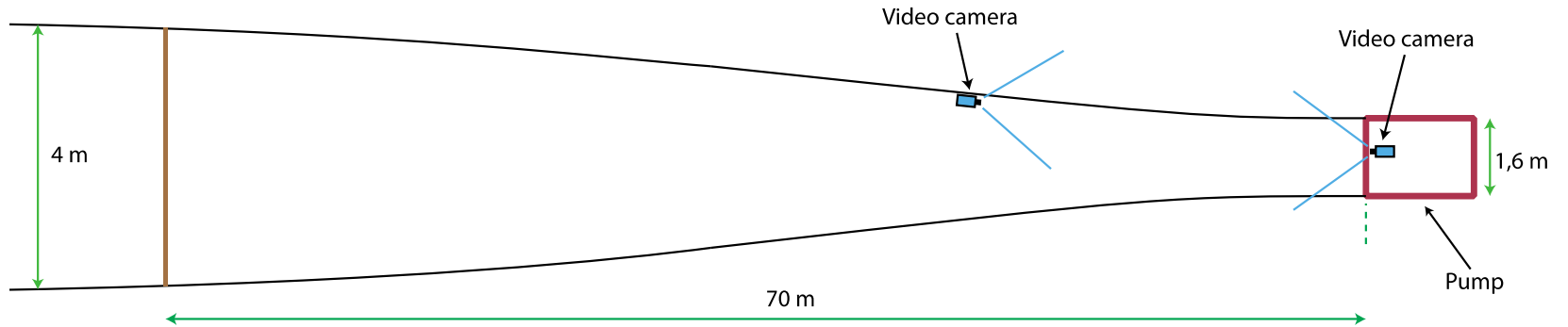


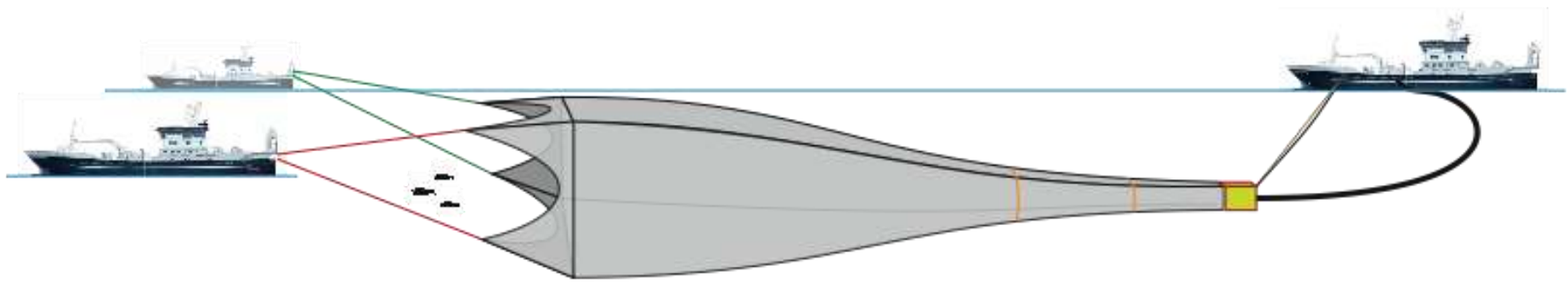
T90 Codend + 20m normal



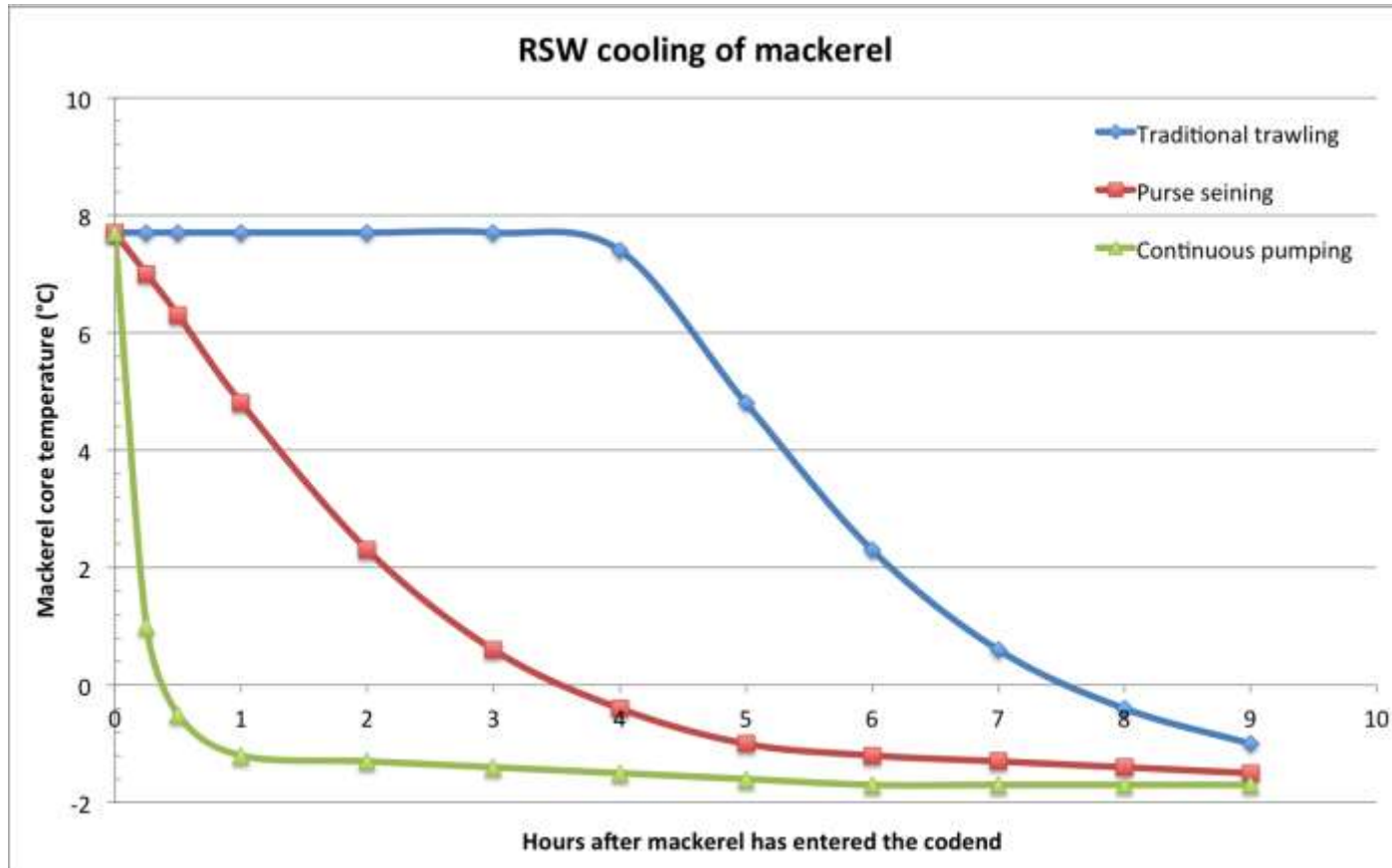
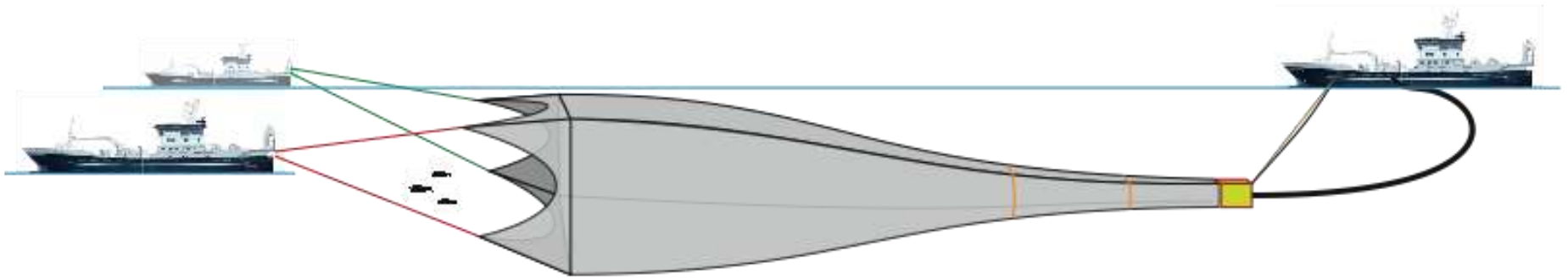


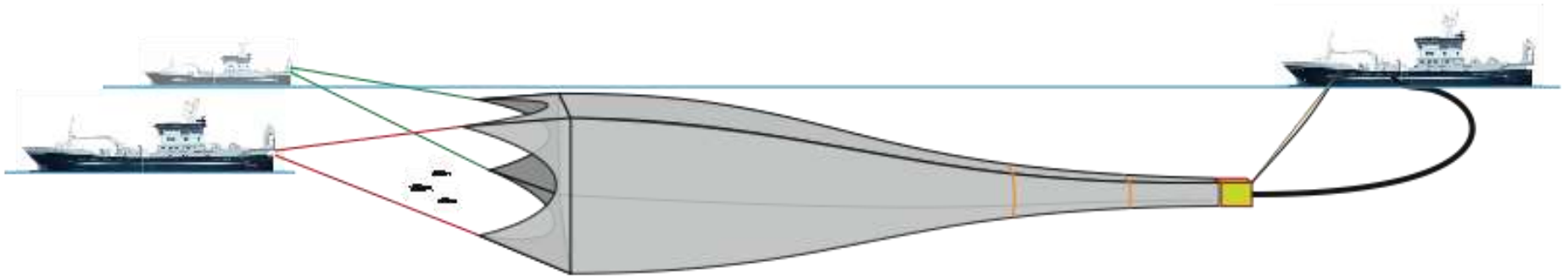
### T90 Codend

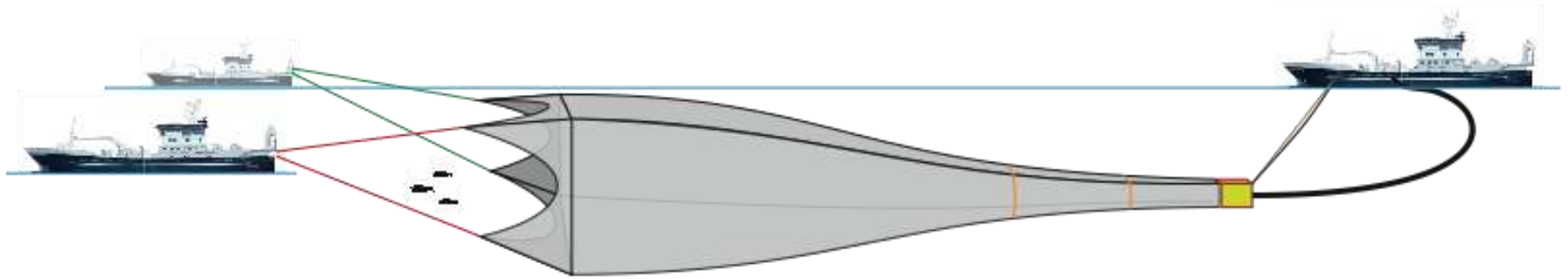




-6,8°C







### Advantages:

- Gentle to the fish. No stuffing in the codend.
- Instant indication of specie and size.
- Constant feed. Faster cooling of fish, by several hours.
- Possibility for sorting and other equipment in codend.
- Enhances skippers experience on reading the sonar picture.
- Time efficiency. Only need to shoot/haul once per trip.
- Gentler pumping. 50-100 t/h vs 1000 t/h

### Disadvantages:

- Currently needs 3 vessels.
- More equipment, more things to break.
- Trawling normally not as energy efficient as purse seining.